



Government of India
Ministry of Earth Sciences
India Meteorological Department



Press Release

Date: 05th December, 2025

Time of Issue: 1315 hours IST

Subject: (i) Isolated heavy rainfall likely over south Tamil Nadu on 05th December.

(ii) Cold wave conditions continue to prevail in isolated pockets over Punjab, Haryana, Chandigarh & Delhi, north west Jharkhand & north interior Odisha on 06th & 07th; over Uttar Pradesh & East Rajasthan on 06th December.

Realised weather during past 24 hours ending at 0830 hours IST of today, the 05th December, 2025:

- ❖ **Heavy rainfall** at isolated places over Coastal Andhra Pradesh, Tamil Nadu, Coastal Karnataka, and Rayalaseema.
- ❖ **Dense fog (visibility 50-199 m):** reported in isolated pockets of Himachal Pradesh, Odisha, Assam & Meghalaya, Manipur.
- ❖ **Cold wave conditions** at isolated places over Punjab, Haryana, Chandigarh & Delhi.
- ❖ **Cold Day conditions** at isolated places over Haryana.
- ❖ **Ground frost** reported at isolated places over Uttarakhand.

Weather Systems, Forecast and Warnings (refer to ANNEXURE I & II):

- ❖ The **upper air cyclonic circulation** lies over east Bangladesh adjoining Assam & Meghalaya at lower tropospheric levels.
- ❖ A **trough** runs from southeast Arabian sea to southwest Bay of Bengal & adjoining equatorial Indian ocean across Comorin area at lower tropospheric levels.
- ❖ The **Western disturbance** as an upper air cyclonic circulation lies over north Punjab & neighbourhood at lower tropospheric levels.
- ❖ The **induced cyclonic circulation** lies over northwest Uttar Pradesh & neighbourhood at lower tropospheric levels.
- ❖ Another **Western Disturbance** seen as a trough in middle tropospheric westerlies roughly along Long. 60°E to the north of Lat. 36°N.

Under the influence of these systems, the following weather is likely:

- ❖ **Light/moderate isolated rainfall/snowfall** very likely over Jammu-Kashmir-Ladakh-Gilgit-Baltistan-Muzaffarabad on 05th & 08th; Himachal Pradesh on 05th & 07th; Uttarakhand on 07th & 08th December.
- ❖ Light to moderate rainfall accompanied with thunderstorm, lightning with **heavy rainfall** very likely at isolated places over south Tamil Nadu on 05th December.
- ❖ Light to moderate rainfall at a few places **accompanied with thunderstorm, lightning** over Tamil Nadu, Puducherry & Karaikal on 05th & 06th; Kerala & Mahe, Coastal Andhra Pradesh & Yanam, Rayalaseema on 05th December.
- ❖ **Thunderstorm, lightning with Gusty Wind speed (30-40 gusting upto 50 kmph)** likely to prevail over Andaman & Nicobar Islands during 05th -07th December.

Temperature Conditions during past 24 hours till 0830 hours IST of today:

- ❖ **Minimum temperatures** are in the range of **less than 5°C** at most places over Jammu-Kashmir-Ladakh-Gilgit-Baltistan-Muzaffarabad; at many places over Himachal Pradesh; at isolated places over Uttarakhand, East Rajasthan; in the **range of 5°-10°C** at many places over Uttar Pradesh, Haryana Chandigarh & Delhi and Punjab;

at few places of Madhya Pradesh, West Rajasthan; at isolated places over Chhattisgarh, Odisha, Bihar & Jharkhand. **The lowest minimum temperature of 2.0 °C is reported at Adampur (Punjab) over the plains of India.**

- ❖ **Minimum Temperature** were below normal (-1.6°C to -3.0°C) at many places over Punjab, East Rajasthan; at few places over West Madhya Pradesh, Vidarbha; at isolated places over Himachal Pradesh, East Madhya Pradesh, Chhattisgarh, Gangetic West Bengal; at appreciably below normal (-3.1°C to -5.0°C) at isolated places over Uttar Pradesh & Bihar; markedly below normal (-5.1°C or smaller) at isolated places over Delhi, Haryana. (refer to ANNEXURE IV)

Forecast of minimum temperatures:

- ❖ Gradual rise in minimum temperature by 2-3°C over northwest India during next 3 days and thereafter no significant change.
- ❖ No significant change in minimum temperature likely for next 4 days and fall by 2-3°C thereafter over Maharashtra and no significant change in minimum temperature is likely over Gujrat region during next 7 days.
- ❖ No significant change in minimum temperature likely for the next 7 days over the central, east and northeastern parts of the country.

Dense Fog & Cold wave warning Warnings:

- ❖ **Cold wave conditions** very likely to prevail in isolated pockets over Punjab, Haryana Chandigarh & Delhi, northwest Jharkhand & north interior Odisha during 06th & 07th; Uttar Pradesh, East Rajasthan on 06th December.
- ❖ **Dense fog conditions** very likely to prevail during early morning hours in isolated pockets of Assam & Meghalaya, Nagaland, Manipur, Mizoram & Tripura during 06th-10th; Himachal Pradesh during 06th-08th and over Odisha on 06th & 07th December.

Fisherman Warning:

Fishermen are advised not to venture into the following areas during 05th December to 10th December:

- ❖ **Arabian Sea:**
Over southeast Arabian sea, Lakshadweep islands and along & off Kerala, Karnataka coasts on 05th December.
- ❖ **Bay of Bengal: Nil**

ii) Weather conditions and forecast over Delhi/NCR during 05th December–08th December, 2025 (ANNEXURE III)

For more details, kindly refer National Weather Bulletin:

https://mausam.imd.gov.in/responsive/all_india_forecast_bulletin.php

For District wise warnings refer: <https://mausam.imd.gov.in/responsive/districtWiseWarningGIS.php>

For Fishermen warning refer <https://rsmcnewdelhi.imd.gov.in/fishermen-warning.php>

Significant rainfall recorded (in cm) (from 0830 hours IST of yesterday to 0830 hours IST of today):

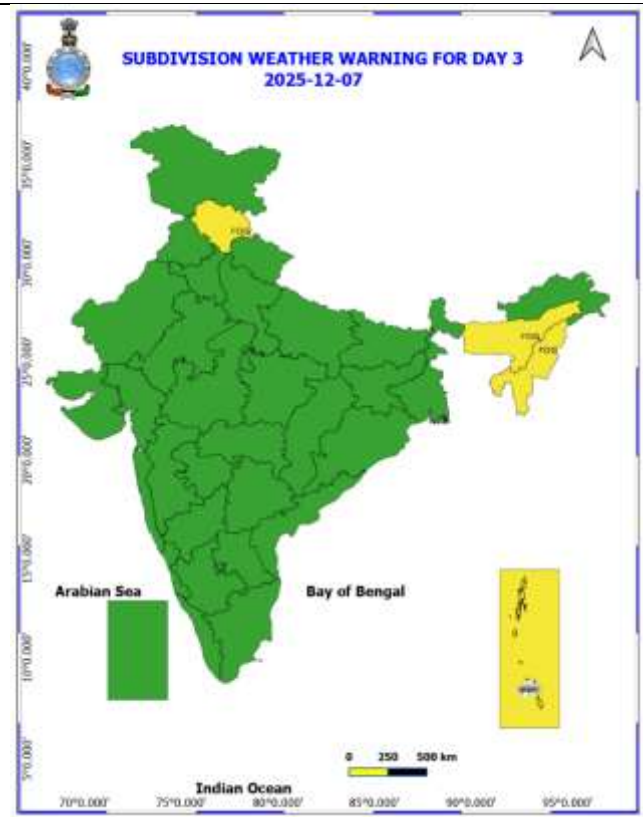
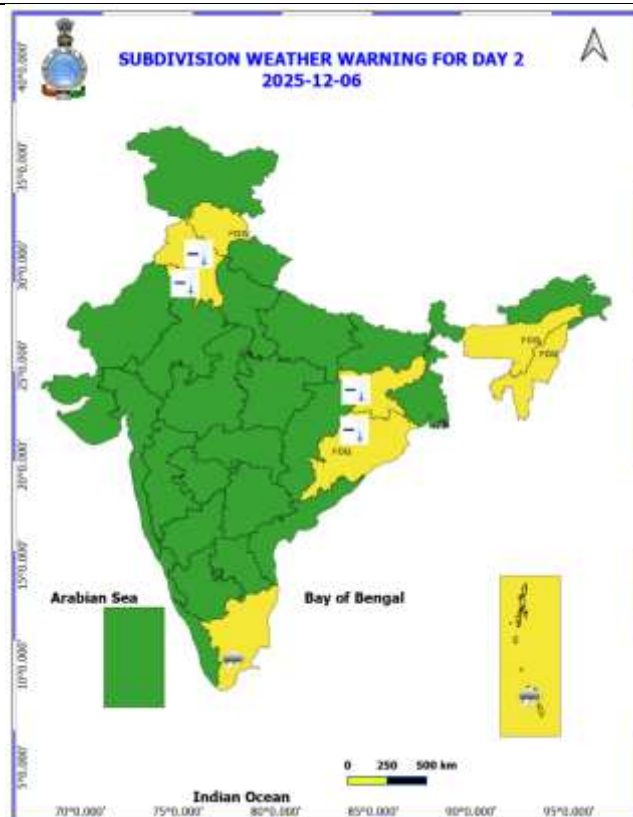
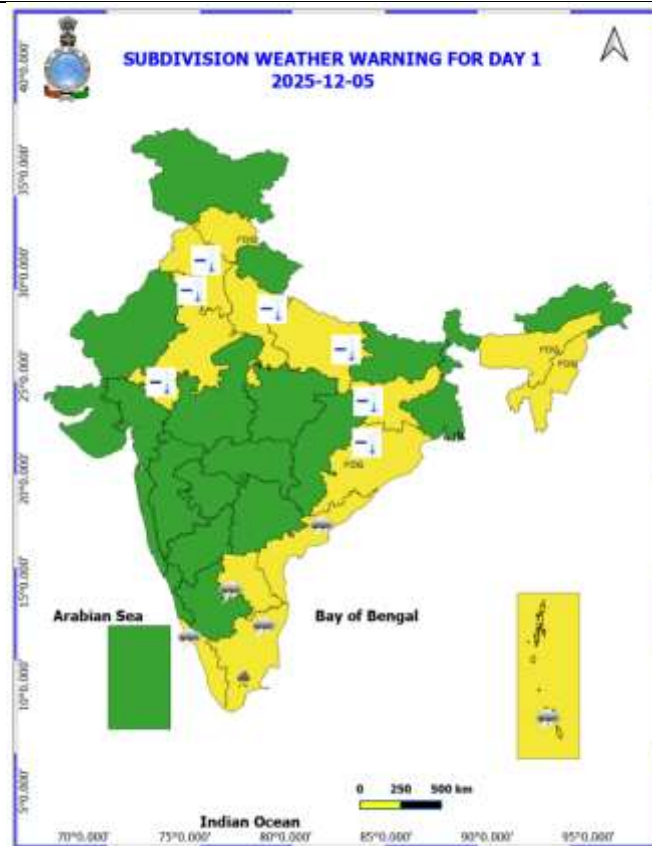
- ❖ **Coastal Andhra Pradesh & Yanam:** Nellore (dist Spsr Nellore) 10,
- ❖ **Coastal Karnataka:** Dakshina Kannada_Bantwal_Kadeshwalya 9, Dakshina Kannada_Belthangadi_Madhantharyu 8,
- ❖ **Tamil Nadu, Puducherry & Karaikal:** Uthukottai (dist Tiruvallur) 9, Zone 15 Okkiyam Thoraipakkam (dist Chennai), VIT_Chennai AWS (dist Chengalpattu) 7 each,
- ❖ **Royalaseema:** Kodur (dist Ysr District) 7,

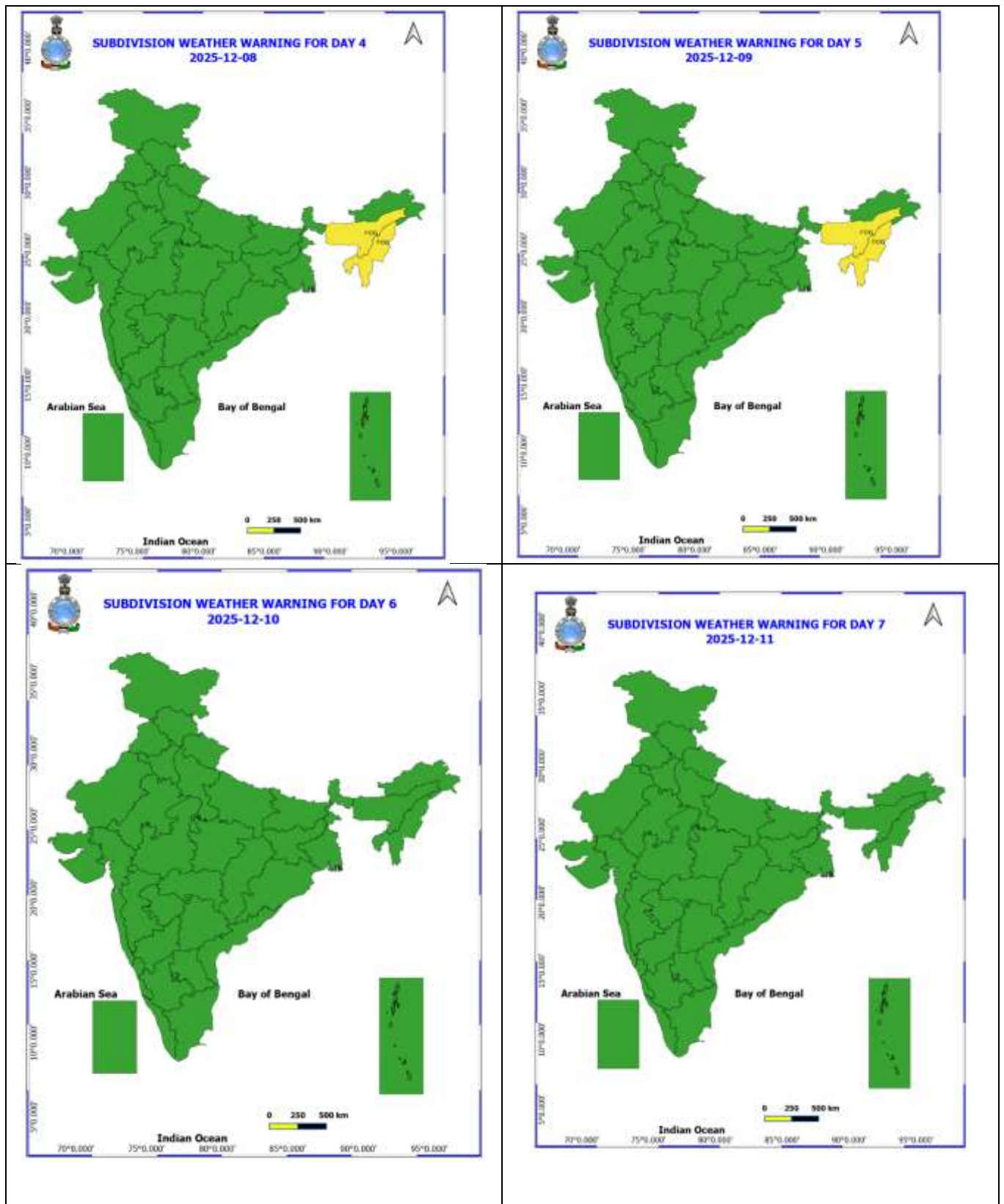
Visibility reported (≤200 m) (in meter):

- ❖ **Odisha:** Rourkela 50;
- ❖ **Assam & Meghalaya:** Barapani 50, Jorhat 100.
- ❖ **Manipur:** Imphal 100.
- ❖ **Himachal Pradesh:** Bilaspur 100.

Table-1								
7 Days Rainfall Forecast								
S.No.	Subdivision	5- Dec	6- Dec	7- Dec	8- Dec	9- Dec	10- Dec	11- Dec
		Day 1	Day 2	Day 3	Day 4	Day 5	Day 6	Day 7
1	ANDAMAN & NICOBAR ISLANDS	SCT	FWS	FWS	SCT	ISOL	ISOL	ISOL
2	ARUNACHAL PRADESH	DRY	DRY	DRY	DRY	DRY	DRY	DRY
3	ASSAM & MEHGHALAYA	DRY	DRY	DRY	DRY	DRY	DRY	DRY
4	NAGALAND, MANIPUR, MIZORAM AND TRIPURA	DRY	DRY	DRY	DRY	DRY	DRY	DRY
5	SUB HIMALAYAN WEST BENGAL & SIKKIM	DRY	DRY	DRY	DRY	ISOL	ISOL	DRY
6	GANGETIC WEST BENGAL	DRY	DRY	DRY	DRY	DRY	DRY	DRY
7	ODISHA	DRY	DRY	DRY	DRY	DRY	DRY	DRY
8	JHARKHAND	DRY	DRY	DRY	DRY	DRY	DRY	DRY
9	BIHAR	DRY	DRY	DRY	DRY	DRY	DRY	DRY
10	EAST UTTAR PRADESH	DRY	DRY	DRY	DRY	DRY	DRY	DRY
11	WEST UTTAR PRADESH	DRY	DRY	DRY	DRY	DRY	DRY	DRY
12	UTTARAKHAND	ISOL	DRY	ISOL	ISOL	DRY	DRY	DRY
13	HARYANA, CHANDIGARH & DELHI	DRY	DRY	DRY	DRY	DRY	DRY	DRY
14	PUNJAB	DRY	DRY	DRY	DRY	DRY	DRY	DRY
15	HIMACHAL PRADESH	ISOL	DRY	ISOL	DRY	DRY	DRY	DRY
16	JAMMU AND KASHMIR AND LADAKH	ISOL	DRY	DRY	ISOL	DRY	DRY	DRY
17	WEST RAJASTHAN	DRY	DRY	DRY	DRY	DRY	DRY	DRY
18	EAST RAJASTHAN	DRY	DRY	DRY	DRY	DRY	DRY	DRY
19	WEST MADHYA PRADESH	DRY	DRY	DRY	DRY	DRY	DRY	DRY
20	EAST MADHYA PRADESH	DRY	DRY	DRY	DRY	DRY	DRY	DRY
21	GUJRAT REGION	DRY	DRY	DRY	DRY	DRY	DRY	DRY
22	SAURASHTRA & KUTCH	DRY	DRY	DRY	DRY	DRY	DRY	DRY
23	KONKAN & GOA	DRY	DRY	DRY	DRY	DRY	DRY	DRY
24	MADHYA MAHARASHTRA	DRY	DRY	DRY	DRY	DRY	DRY	DRY
25	MARATHWADA	DRY	DRY	DRY	DRY	DRY	DRY	DRY
26	VIDARBHA	DRY	DRY	DRY	DRY	DRY	DRY	DRY
27	CHHATTISGARH	DRY	DRY	DRY	DRY	DRY	DRY	DRY
28	COASTAL ANDHRA PRADESH	ISOL	ISOL	ISOL	DRY	DRY	DRY	DRY
29	TELANGANA	DRY	DRY	DRY	DRY	DRY	DRY	DRY
30	RAYALASEEMA	ISOL	ISOL	ISOL	DRY	DRY	DRY	DRY
31	TAMILNADU & PUDUCHERRY	SCT	ISOL	ISOL	ISOL	ISOL	ISOL	ISOL
32	COSTAL KARNATAKA	SCT	DRY	DRY	DRY	DRY	DRY	DRY
33	NORTH INTERIOR KARNATAKA	DRY	DRY	DRY	DRY	DRY	DRY	DRY
34	SOUTH INTERIOR KARNATAKA	ISOL	DRY	DRY	DRY	DRY	DRY	DRY
35	KERALA AND MAHE	SCT	ISOL	ISOL	ISOL	ISOL	ISOL	ISOL
36	LAKSHADWEEP	SCT	SCT	DRY	DRY	DRY	DRY	DRY

- As the lead period increases forecast accuracy decrease.





- Action may be taken based on ORANGE AND REDCOLOUR warnings.
- Vulnerable regions likely urban and hilly areas action may be initiated for heavy rainfall warning.
- As the lead period increases forecast accuracy decreases.

Detailed districtwise MultiHazard weather warning for next five days available at
<https://mausam.imd.gov.in/responsive/districtWiseWarningGIS.php>

Weather forecast over Delhi/NCR during 05th December to 08th December 2025**Past Weather:**

There has been no large change in maximum temperatures and in minimum temperatures during the past 24 hours over Delhi. The maximum and minimum temperatures over Delhi were around 20 to 23°C and 06 to 07°C, respectively. The minimum temperatures are markedly below normal (-5.1°C or less) at isolated places and appreciably below normal (-3.1 to -5.0 °C) at few places and below normal (-1.6 to -3.0°C) over remaining parts of Delhi. The maximum temperatures were appreciable below normal (-3.1 to -5.0°C) at many places, below normal (-1.6 to -3.0°C) at isolated places and normal (-1.5 to 1.5°C) over remaining parts of Delhi. Safdarjung airport recorded the lowest visibility 1200m from 0630 Hrs IST to 0800 Hrs IST on 05.12.2025 which thereafter improved becoming 1500m at 0830 Hrs IST. Palam airport recorded the lowest visibility 1300m from 0800 Hrs IST to 1000 Hrs IST on 05.12.2025 which thereafter improved becoming 1500m at 1030 Hrs IST. Mainly clear sky conditions with predominant surface wind from the west direction, with a wind speed up to 16 kmph, prevailed during the past 24 hours. Mainly clear sky conditions with wind from the west direction with a wind speed up to 10 kmph prevailed over the region in the forenoon today.

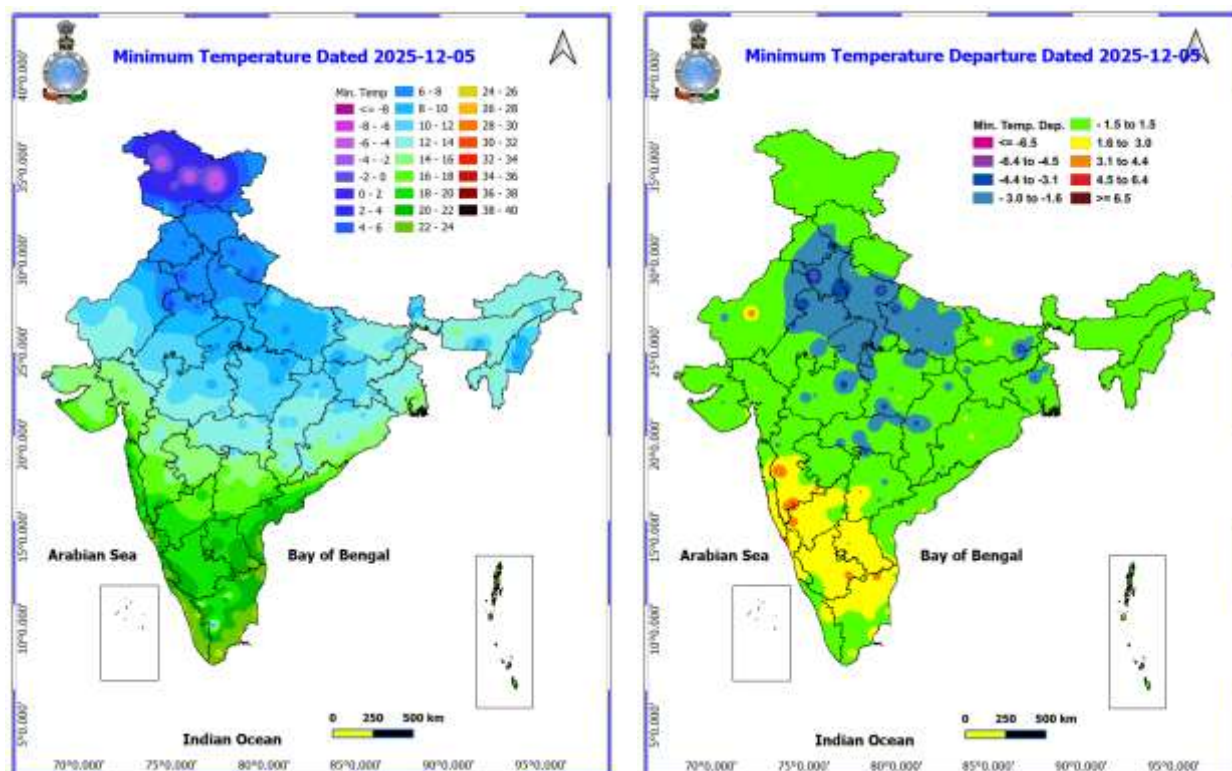
Weather Forecast:

05.12.2025: Mainly clear sky. Mist/Haze during the night. The maximum temperatures are likely to be in the range of 21 to 23°C. The maximum temperatures will be below normal (-1.7 to -3.7 °C) over Delhi. The predominant surface wind is likely to be from the northwest direction, with wind speeds up to 15 kmph during the afternoon hours. The wind speed will decrease up to 10 kmph from the northwest direction during the evening and night.

06.12.2025: Partly cloudy sky. Shallow fog during morning hours. The maximum and minimum temperatures over Delhi are likely to be in the range of 22 to 24°C and 07 to 09°C respectively. The minimum temperatures will be below normal (-0.5 to -2.5°C), and the maximum temperatures will be below normal (-1.3 to -3.3 °C) over Delhi. The predominant surface wind is likely to be from the west direction with wind speeds up to 15 kmph during morning hours. The wind speed will increase, becoming less than 22 kmph from the northwest direction in the afternoon. The wind speed will decrease, becoming less than 10 kmph from the northwest direction during the evening and night.

07.12.2025: Partly cloudy sky. Shallow fog during morning hours. The maximum and minimum temperatures over Delhi are likely to be in the range of 23 to 25°C and 08 to 10°C respectively. The minimum temperatures will be near normal, and the maximum temperatures will be below normal (-0.8 to -1.8 °C) over Delhi. The predominant surface wind is likely to be from the northwest direction associated with wind speeds up to 15 kmph during morning hours. The wind speed will increase becoming up to 20 kmph from the northwest direction in the afternoon. The wind speed will decrease, becoming less than 15 kmph from the northwest direction during the evening and night.

08.12.2025: Mainly clear sky. Shallow fog during morning hours. The maximum and minimum temperatures over Delhi are likely to be in the ranges of 24 °C to 26 °C and 8°C to 10 °C, respectively. The minimum temperatures and the maximum temperatures will be near normal over Delhi. The predominant surface wind is likely to be from the northwest direction, with wind speeds of up to 15 kmph during the morning hours. The wind speed will increase up to 20 kmph from the northwest direction in the afternoon. The predominant surface wind is likely to be from the northwest direction with wind speed up to 10 kmph during the evening and night.



Impact expected due to Cold Wave conditions over Punjab, Haryana Chandigarh & Delhi, Jharkhand & Odisha during 06th & 07th; Uttar Pradesh & East Rajasthan on 06th December.

- ❖ An increased likelihood of various illnesses like flu, running/ stuffy nose or nosebleed, which usually set in or get aggravated due to prolonged exposure to cold.
- ❖ Do not ignore shivering. It is the first sign that the body is losing heat. Get Indoors.
- ❖ Frostbite can occur due to prolonged exposure to cold. The skin turns pale, hard and numb and eventually black blisters appear on exposed body parts such as fingers, toes, nose and or earlobes. Severe frostbite needs immediate medical attention and treatment.
- ❖ Impact on agriculture, crop, livestock, water supply, transport and power sector at some places.

Action suggested:

- ❖ Wear several layers of loose fitting, light weight; warm woollen clothing.
- ❖ Cover your head, neck, hands and toes adequately as majority of heat loss occurs through these body parts. Wear several layers of loose fitting, light weight; warm woollen clothing rather than one layer of heavy cloth.
- ❖ Eat vitamin-C rich fruits & vegetable and drink sufficient fluids preferably warm fluids to maintain adequate immunity.
- ❖ Avoid or limit outdoor activities.
- ❖ Keep dry, if wet, change cloths immediately to prevent loss of body heat. Wear insulated/waterproof shoes.
- ❖ Warm the affected area of the body slowly with lukewarm water; do not rub the skin vigorously.
- ❖ If the affected skin area turns black, immediately consult a doctor.
- ❖ Maintain ventilation while using Heaters to avoid inhaling toxic fumes.
- ❖ Take safety measures while using electrical and gas heating devices.
- ❖ Extreme care needed for vulnerable people.
- ❖ Seek medical attention as soon as possible for someone suffering from frostbite/ Hypothermia.
- ❖ Protect livestock from cold weather.

Agromet advisories for likely impact of Heavy Rainfall

- In **Tamil Nadu**, postpone sowing of groundnut. Drain out excess rain water from the fields of rice, groundnut, sugarcane, cotton, black gram, maize and vegetables and plantations of coconut, banana, arecanut, mango,

rubber, cinnamon and black pepper. Strengthen irrigation channels and field bunds in rice to avoid crop lodging. Provide support to banana plants with wooden poles to prevent them from falling.

- In **Rayalaseema**, drain out excess water from rice nurseries, sugarcane, and already sown chickpea and black gram. Maintain optimum water level in already transplanted rice fields.

Livestock / Fishery

- Keep the animals inside the shed during heavy rainfall and provide them balanced feed.
- Store feed and fodder in a safe place to prevent spoilage.
- Construct an outlet with proper netting around the ponds to drain out excess water, thereby preventing fish from escaping in case of overflow.

Agromet advisories for likely impact of Thunderstorm / Gusty Winds

- Provide mechanical support to horticultural crops and staking or support to vegetables and young fruit plants / fruit-bearing plants to avoid lodging due to strong winds.

Agromet advisories for likely impact of Cold Waves / Low Temperatures

- In **Punjab, Haryana, Uttar Pradesh, East Rajasthan, North Interior Odisha and Jharkhand**, apply light and frequent irrigation to the standing crops in the evening to protect the crops from low temperature stress. Use mulching and cover vegetable nurseries and young fruit plants with straw / polythene sheets to maintain optimum soil temperature.

Livestock / Poultry

- Keep cattle inside the sheds during night and provide dry bedding to protect them from cold.
- Keep the chicks warm by providing artificial light in the poultry sheds.

Legends & abbreviations:

- ❖ **Heavy Rain:**64.5-115.5mm; **Very Heavy Rain:**115.6-204.4mm; **Extremely Heavy Rain:** >204.4mm.
- ❖ **Obsy:** Observatory; Automatic Weather Station; **ARG:** Automatic Rain Gauge; **dist:** District; **NH:** National Highway; **KVK:** Krishi Vigyan Kendra; **DVC:** Damodar Valley Corporation; **PTO:** Part Time Office, **Aero:** Aerodrome, **IAF:** Indian Air Force.
- ❖ **Region wise classification of meteorological Sub-Divisions:**
 - **Northwest India:** Western Himalayan Region (Jammu-Kashmir-Ladakh-Gilgit-Baltistan-Muzaffarabad, Himachal Pradesh and Uttarakhand); Punjab, Haryana-Chandigarh-Delhi; West Uttar Pradesh, East Uttar Pradesh, West Rajasthan and East Rajasthan.
 - **Central India:** West Madhya Pradesh, East Madhya Pradesh, Vidarbha and Chhattisgarh.
 - **East India:** Bihar, Jharkhand, Sub-Himalayan West Bengal & Sikkim; Gangetic West Bengal, Odisha and Andaman & Nicobar Islands.
 - **Northeast India:** Arunachal Pradesh, Assam & Meghalaya and Nagaland, Manipur, Mizoram & Tripura.
 - **West India:** Gujarat Region, Saurashtra & Kutch, Konkan & Goa, Madhya Maharashtra and Marathawada.
 - **South India:** Coastal Andhra Pradesh & Yanam, Telangana, Rayalaseema, Coastal Karnataka, North Interior Karnataka, South Interior Karnataka, Kerala & Mahe, Tamil Nadu, Puducherry & Karaikal and Lakshadweep.

LEGENDS

1. अंडमान और निकोबार द्वीपसमूह

2. अरुणाचल प्रदेश

3. असम और मेघालय

4. नागालैंड, मणिपुर, मिजोरम और त्रिपुरा

5. उप-हिमालयी पश्चिम बंगाल और सिक्किम

6. गंगीय पश्चिम बंगाल

7. ओडिशा

8. झारखंड

9. बिहार

10. पूर्वी उत्तर प्रदेश

11. पश्चिम उत्तर प्रदेश

12. उत्तराखंड

13. हरियाणा, चंडीगढ़ और दिल्ली

14. पंजाब

15. हिमाचल प्रदेश

16. जम्मू और कश्मीर और लद्दाख

17. पश्चिम राजस्थान

18. पूर्वी राजस्थान

19. पश्चिम मध्य प्रदेश

20. पूर्वी मध्य प्रदेश

21. गुजरात

22. सौराष्ट्र

23. कोंकण और गोवा

24. मध्य महाराष्ट्र

25. मराठवाड़ा

26. विदर्भ

27. छत्तीसगढ़

28. तटीय आंध्र प्रदेश और यनम

29. तेलंगाना

30. रायलसीमा

31. तमिलनाडु, पुडुचेरी और कराईकल

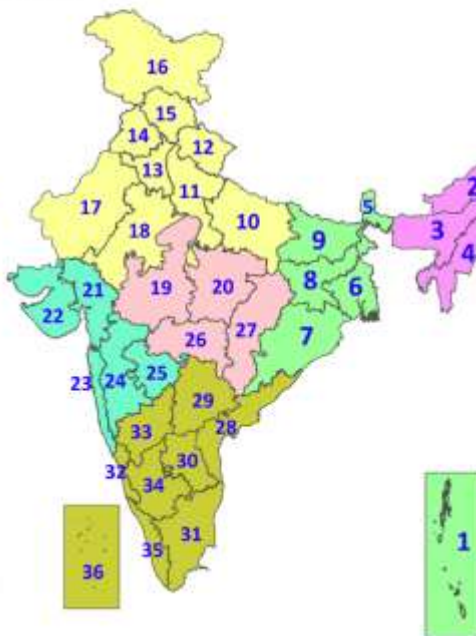
32. तटीय कर्नाटक

33. आंतरिक उत्तरी कर्नाटक

34. आंतरिक दक्षिणी कर्नाटक

35. केरल और माहे

36. लक्षद्वीप



1. Andaman & Nicobar Islands

2. Arunachal Pradesh

3. Assam & Meghalaya

4. Nagaland, Manipur, Mizoram & Tripura

5. Sub-Himalayan West Bengal & Sikkim

6. Gangetic West Bengal

7. Odisha

8. Jharkhand

9. Bihar

10. East Uttar Pradesh

11. West Uttar Pradesh

12. Uttarakhand

13. Haryana, Chandigarh & Delhi

14. Punjab

15. Himachal Pradesh

16. Jammu & Kashmir and Ladakh

17. West Rajasthan

18. East Rajasthan

19. West Madhya Pradesh

20. East Madhya Pradesh

21. Gujarat

22. Saurashtra

23. Konkan & Goa

24. Madhya Maharashtra

25. Marathwada

26. Vidarbha

27. Chhattisgarh

28. Coastal Andhra Pradesh & Yanam

29. Telangana

30. Rayalaseema

31. Tamilnadu, Puducherry & Karaikal

32. Coastal Karnataka

33. North Interior Karnataka

34. South Interior Karnataka

35. Kerala & Mahe

36. Lakshadweep

SPATIAL DISTRIBUTION (% of Stations reporting)

% Stations	Category	% Stations	Category
76-100	Widespread (WS/Most Places)	26-50	Scattered (SCT/A Few Places)
51-75	Fairly Widespread (FWS/Many Places)	1-25	Isolated (ISOL)



Fog



Heavy Snow



Cold Wave



Heavy Rain



Dust Storm



Cold Day



Very Heavy Rain



Heat Wave



Ground Frost



Extremely Heavy Rain



Warm Night



Thunder & Lightning



Hot Day



Hailstorm



Hot & Humid



Dust Raising Winds



Strong Surface Winds

COLOUR CODED WARNING

No Warning (No Action)

Watch (Be Aware)

Alert (Be Prepared To Take Action)

Warning (Take Action)

Probabilistic Forecast

Terms	Probability of Occurrence (%)
Unlikely	< 25
Likely	25 - 50
Very Likely	50 - 75
Most Likely	> 75

* Red colour warning does not mean "Red Alert", Red colour warning means "Take Action".

Forecast and Warning for any day is valid from 0830 hours IST of day till 0830 hours IST of next day.

For more details, kindly visit <https://mausam.imd.gov.in> or contact: 011-2434-4599

(Service to the Nation since 1875)

DEFINITION/CRITERIA

Rain/ Snow *

Heavy: 64.5 to 115.5 mm/cm *
Very Heavy: 115.6 to 204.4 mm/cm *
Extremely Heavy: > 204.4 mm/cm *

Heat Wave

When maximum temperature of a station reaches $\geq 40^{\circ}\text{C}$ for plains and $\geq 30^{\circ}\text{C}$ for hilly regions
(a) Based on Departure from normal

Heat Wave: Maximum Temperature Departure from normal 4.5°C to 6.4°C .

Severe Heat Wave: Maximum Temperature Departure from normal $\geq 6.5^{\circ}\text{C}$

(b). Based on Actual maximum temperature

Heat Wave: When actual maximum temperature $\geq 45^{\circ}\text{C}$.

Severe Heat Wave: When actual maximum temperature $\geq 47^{\circ}\text{C}$.

(c). Criteria for heat wave for coastal stations

When maximum temperature departure is $> 4.5^{\circ}\text{C}$ from normal. Heat Wave may be described provided maximum temperature $\geq 37^{\circ}\text{C}$.

Warm Night

When maximum temperature remains 40°C

Warm Night: When minimum temperature departure 4.5°C to 6.4°C .

Severe Warm Night: When minimum temperature departure $> 6.4^{\circ}\text{C}$.

Cold Wave

When minimum temperature of a station $\leq 10^{\circ}\text{C}$ for plains and $\leq 0^{\circ}\text{C}$ for hilly regions.

(a). Based on departure

Cold Wave: Minimum Temperature Departure from normal -4.5°C to -6.4°C .

Severe Cold Wave: Minimum Temperature Departure from normal $\leq -6.5^{\circ}\text{C}$

(b) Based on actual Minimum Temperature (for Plains only)

Cold Wave: When Minimum Temperature is $\leq 4.0^{\circ}\text{C}$

Severe Cold Wave: When Minimum Temperature is $\leq 2.0^{\circ}\text{C}$

(c) For Coastal Stations

When Minimum Temperature departure is $\leq -4.5^{\circ}\text{C}$ & actual Minimum Temperature is $\leq 15^{\circ}\text{C}$

Cold Day

When minimum temperature of a station $\leq 10^{\circ}\text{C}$ for plains and $\leq 0^{\circ}\text{C}$ for hilly regions

Based on departure

Cold Day: Maximum Temperature Departure from normal -4.5°C to -6.4°C .

Severe Cold Day: Maximum Temperature Departure from normal $\leq -6.5^{\circ}\text{C}$

Fog

Phenomenon of small droplets suspended in air and the horizontal visibility $< 1\text{km}$

Moderate Fog: When the visibility between 500-200 metres

Dense Fog: when the visibility between 50- 200 metres

Very Dense Fog: when the visibility < 50 metres

Thunderstorm

Sudden electrical discharges manifested by a flash of light (Lightning) and a sharp rumbling sound (thunder)

Dust/Sand Storm

An ensemble of particles of dust or sand energetically lifted to great heights by a strong and turbulent wind.

Frost

Ice deposits on ground

Air temperature $\leq 4^{\circ}\text{C}$ (over Plains)

Squall

A strong wind that rises suddenly, lasts for atleast 1 minute.

Moderate: Wind speed 52-61 kmph

Severe: Wind speed 62-67 kmph

Very Severe: Wind speed > 67 kmph

Sea State

Effect of various waves in the sea over specific area

Rough to very rough: Wind speed 41-62 kmph (22-33 knots) & Wave height 2.5-6 metre

High to very high: Wind speed 63-117 kmph (34-63 knots) & Wave height 6-14 metre

Phenomenal: Wind speed > 117 kmph (> 63 knots) & Wave height > 14 metre

Cyclone

Cyclonic Storm: Wind speed 62-87 kmph (34-47 knots)

Severe Cyclonic Storm: Wind speed 88-117 kmph (48-63 knots)

Very Severe Cyclonic Storm: Wind speed 118-165 kmph (64 - 89 knots)

Extremely Severe Cyclonic Storm: Wind speed 166-220 kmph (90 -119 knots)

Super Cyclone Storm: Wind speed > 220 kmph (> 119 knots)

* Red colour warning does not mean "Red Alert", Red colour warning means "Take Action".

Forecast and Warning for any day is valid from 0830 hours IST of day till 0830 hours IST of next day.

For more details, kindly visit <https://mausam.imd.gov.in> or contact: 011-2434-4599

(Service to the Nation since 1875)